



XANADU art catalogue





“On a ranch, the feeding pasture is usually on relatively flat ground, below the mountains near a river or water. In the winter, it is a very special place to the rancher and it is where he feeds his cattle every day, cares for them, and often watches them give birth. A bond, a special kind of love, forms between the rancher and his animals. I wanted to express this through color, hence this painting.”

### The Color of the Feeding Pasture

by Pat Siegner  
16” x 20”  
Acrylic  
\$1,200

This piece is located at the artist’s studio in **Riverside, OR**. To learn more, view additional work by this artist, or purchase, visit [www.xanadugallery.com/catalogue](http://www.xanadugallery.com/catalogue) and [click here](#) or call Xanadu Gallery at 480.368.9929.



“‘Stealing His Heart’ is my sculptural interpretation of a recent photo taken of my wife and me. When I first looked at the photo, I was struck by the fact that I found my wife to be every bit as appealing and mesmerizing as the day I met her—perhaps even more so. I reflected on our initial meeting in our native Colombia and how I was swept up in love as she instantly stole my heart. What is so amazing to me is the fact that I have never gotten my heart back from her—it remains stolen to this day!”

Stealing His Heart  
by Guillaume  
30” x 20”  
Bronze Wall Relief  
\$2,800

This piece is available through **Xanadu Gallery’s Scottsdale Showroom**. To learn more, view additional work by this artist, or purchase, visit [www.xanadugallery.com/catalogue](http://www.xanadugallery.com/catalogue) and [click here](#) or call Xanadu Gallery at 480.368.9929.



“This is a composite of two photos. The first is of a press on an abandoned automotive press line. The second is a photo I took in Monument Valley. The image depicts man-made verses nature.”

### Through the Looking Glass

by Joseph Martin  
38” x 27”  
Digital Photography  
\$500

This piece is located at the artist’s studio in **Canfield, OH**. To learn more, view additional work by this artist, or purchase, visit [www.xanadugallery.com/catalogue](http://www.xanadugallery.com/catalogue) and [click here](#) or call Xanadu Gallery at 480.368.9929.



“Walking in the bush at night, I love looking at the shadows cast upon the snow. The trees stand like soldiers guarding the dark night and the snow captures the shimmering light of the moon. The painting is framed and ready to hang.”

### Night Soldiers

by R.L. Fitzpatrick  
19” x 19”  
Pastel  
\$900

This piece is located at the artist’s studio in **Winnipeg, MB, Canada**. To learn more, view additional work by this artist, or purchase, visit [www.xanadugallery.com/catalogue](http://www.xanadugallery.com/catalogue) and [click here](#) or call Xanadu Gallery at 480.368.9929.

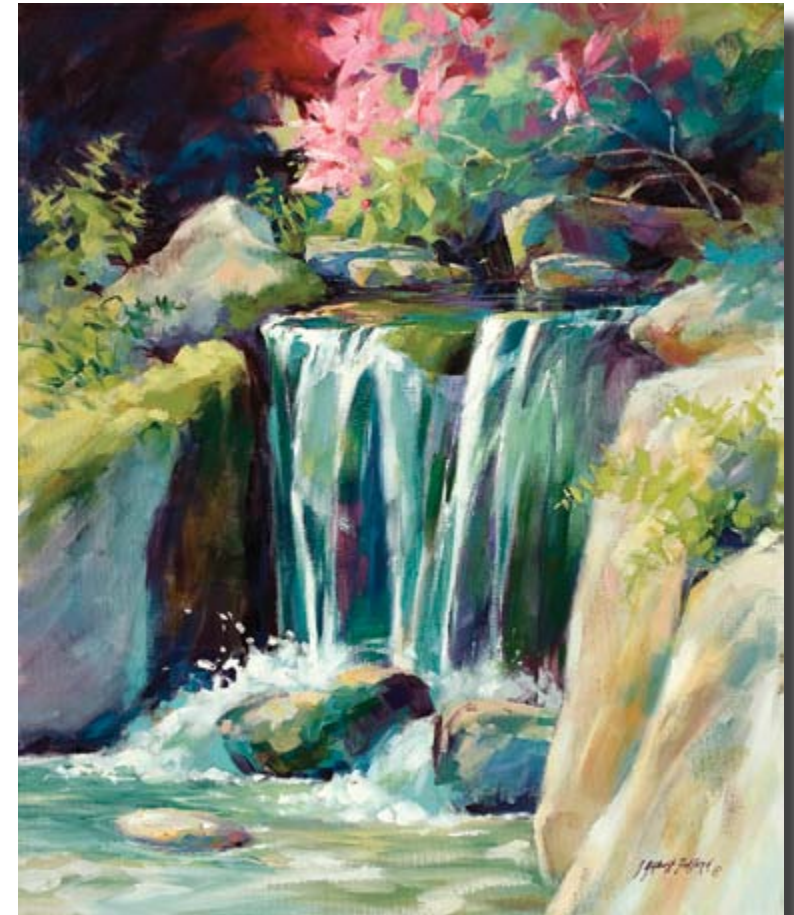


“In April, I was one of over 50 artists who participated in the 6th Annual ‘Paint the Town’ Plein Air competition in Marble Falls, Texas. This lonely sailboat caught my eye on Thursday, so I returned on Friday to paint it. It was a lovely sunny day that would have been a great day to go sailing.”

### Waiting for Sunday

by Anne Aleshire  
11” x 14”  
Oil on Canvas Board  
\$500

This piece is located at the artist’s studio in **Fairbanks, AK**.  
To learn more, view additional work by this artist, or purchase,  
visit [www.xanadugallery.com/catalogue](http://www.xanadugallery.com/catalogue) and [click here](#)  
or call Xanadu Gallery at 480.368.9929.



“I found this little gem of a waterfall in the Butchart Gardens in Victoria, BC. Rocks, water and flowers being my favorite subjects to paint, I love it when I can put them all into one painting. I try to enable the viewer to hear the music of the cascading water and smell the scents of the fresh spring day.”

### Crystal Ribbons

by Julie Gilbert Pollard  
24” x 20”  
Oil  
\$1,625

This piece is located at the artist’s studio in **Phoenix, AZ**.  
To learn more, view additional work by this artist, or purchase,  
visit [www.xanadugallery.com/catalogue](http://www.xanadugallery.com/catalogue) and [click here](#)  
or call Xanadu Gallery at 480.368.9929.



“As the seasons change, so too in our personal lives do we change. I created *Autumn Canopy* during a period of personal change, moving from one chapter in my life to a new one. *Autumn Canopy* is a reflection of this personal transition, illustrated through the symbolism of the seasonal changes and the passage through the canopy of leaves.”

**Autumn Canopy**  
by Alison Galvan  
36” x 36”  
Mixed Media & Acrylic  
\$1,995

This piece is located at the artist’s studio in **St. Catharines, ON, Canada**.  
To learn more, view additional work by this artist, or purchase,  
visit [www.xanadugallery.com/catalogue](http://www.xanadugallery.com/catalogue) and [click here](#)  
or call Xanadu Gallery at 480.368.9929.



“Wind blew through a tall grass prairie and oak hickory savanna. It was a sea of grass in Autumn colors. Painting wind is like painting a spirit. I know it is there; now I capture it in paint.”

**Wind in the Grassland**  
by Suzanne Poursine Massion  
24” x 36”  
Oil  
\$1,900

This piece is located at the artist’s studio in **Hampshire, IL**.  
To learn more, view additional work by this artist, or purchase,  
visit [www.xanadugallery.com/catalogue](http://www.xanadugallery.com/catalogue) and [click here](#)  
or call Xanadu Gallery at 480.368.9929.



“I shot this image in Maui, Hawaii, in a small cove. The motion and colors bring this image to life.”

### Crashing Waves

by Bob Senesac  
12” x 18”

Photographic Mono Type  
\$250

This piece is located at the artist’s studio in **Archer, FL**.  
To learn more, view additional work by this artist, or purchase,  
visit [www.xanadugallery.com/catalogue](http://www.xanadugallery.com/catalogue) and [click here](#)  
or call Xanadu Gallery at 480.368.9929.



“This might be called a ‘portrait of water.’

Every time I paint this view, it has a different personality. I spend time in Maine every summer and the water, rocks, and landscape always present a new aspect for study. I love that the rocks in this view become elastic and alive when mirrored in the rich dark colors of the harbor water. I only wish I could paint the slapping sound of the dinghy, rocking and waiting for the return of the lobster boats.”

### New Harbor Motif III

by Constance Patterson  
36” x 48”

Oil  
\$1,800

This piece is located at the artist’s studio in **Avon, CT**.  
To learn more, view additional work by this artist, or purchase,  
visit [www.xanadugallery.com/catalogue](http://www.xanadugallery.com/catalogue) and [click here](#)  
or call Xanadu Gallery at 480.368.9929.



“I lived in a beach town and I loved the different views and different sunsets. Each day was more beautiful than the day before.”

**Sunset**  
by Dorothy Slikker  
18” x 24”  
Oil  
\$1,800

This piece is located at the artist’s studio in **Pahrump, NV**. To learn more, view additional work by this artist, or purchase, visit [www.xanadugallery.com/catalogue](http://www.xanadugallery.com/catalogue) and [click here](#) or call Xanadu Gallery at 480.368.9929.



“Beaches are for fun: swimming, surfing and great family times. Beaches are also for meditation. Often I paint the desolateness of the seaside. In this painting, I’ve added a lone figure. She is alone, but is she lonely? On walks like these a person can become immersed in the atmosphere, as well as their thoughts.”

**Beach Stroll**  
by Eugenie B. Fein  
20” x 24”  
Oil  
\$865

This piece is located at the artist’s studio in **Morganton, NC**. To learn more, view additional work by this artist, or purchase, visit [www.xanadugallery.com/catalogue](http://www.xanadugallery.com/catalogue) and [click here](#) or call Xanadu Gallery at 480.368.9929.



“Lavender fields abound in Provence, France around the hilltown of Gordes. These were the first to mature into their characteristic display of color and fragrance under the region’s blazing sun. Gallery wrapped 1.5” deep canvas presented in a Larson Juhl Black Silhouette float frame. Available unframed if you prefer (please inquire).”

### Provence Lavender

by Dru Marie Robert  
20” x 20”  
Oil  
\$3,300

This piece is located at the artist’s studio in **Longmont, CO**. To learn more, view additional work by this artist, or purchase, visit [www.xanadugallery.com/catalogue](http://www.xanadugallery.com/catalogue) and [click here](#) or call Xanadu Gallery at 480.368.9929.



“From the top of the Sandia mountains you can see an 11,000 square mile panoramic view of the Rio Grande Valley. In my painting, I animated the mountain peaks as huge prehistoric beasts gazing into the southwest horizon. The bright light from the clear skies illuminates the myriads of hues and shades in the scene. I contrasted the blues and turquoise hues with orange, mauve, and yellow.”

### Sandia Crest

by Heta Kauppinen  
46” x 35”  
oil  
\$9,000

This piece is located at the artist’s studio in **Saint Augustine, FL**. To learn more, view additional work by this artist, or purchase, visit [www.xanadugallery.com/catalogue](http://www.xanadugallery.com/catalogue) and [click here](#) visit [www.xanadugallery.com/catalogue](http://www.xanadugallery.com/catalogue) and



“I was inspired to create this painting after seeing a photograph of an Indian woman carrying a heavy load of limbs through the winter snow, taken circa 1890 by Edward S. Curtis. To me, this symbolized the struggle that it took to survive during those times.”

### **A Cold Winter Night**

by Don Griffith  
12” x 16”  
Colored Pencil  
\$500

This piece is located at the artist’s studio in **Happy Valley, OR**. To learn more, view additional work by this artist, or purchase, visit [www.xanadugallery.com/catalogue](http://www.xanadugallery.com/catalogue) and [click here](#) or call Xanadu Gallery at 480.368.9929.



“The rural landscape in Vermont is laced with picturesque dirt roads leading to secluded farmsteads. Winter mornings in Vermont can be very cold, but that does not prevent the farmer from getting an early start. In this painting, the smoke is already rising from the small wood stove in the tool shed. I stumbled on this just as the sun was starting to clear the frost from the air. Just who the farmer and the two people walking in the distance were, I will never know.”

### **Morning Frost**

by Gary C. Eckhart  
19” x 25”  
Watercolor  
\$1,495

This piece is located at the artist’s studio in **Warren, VT**. To learn more, view additional work by this artist, or purchase, visit [www.xanadugallery.com/catalogue](http://www.xanadugallery.com/catalogue) and [click here](#) or call Xanadu Gallery at 480.368.9929.



“*The Path to Enlightenment* is an inspiring photo-digital artwork that transports the viewer into a world of surrealist possibilities. Building on the American Landscape, Dale’s digital art transcends the ordinary and documents places we’d all like to visit but don’t exist (except in our minds). This is a true alchemy of photography and digital mastery.”

### **The Path to Enlightenment**

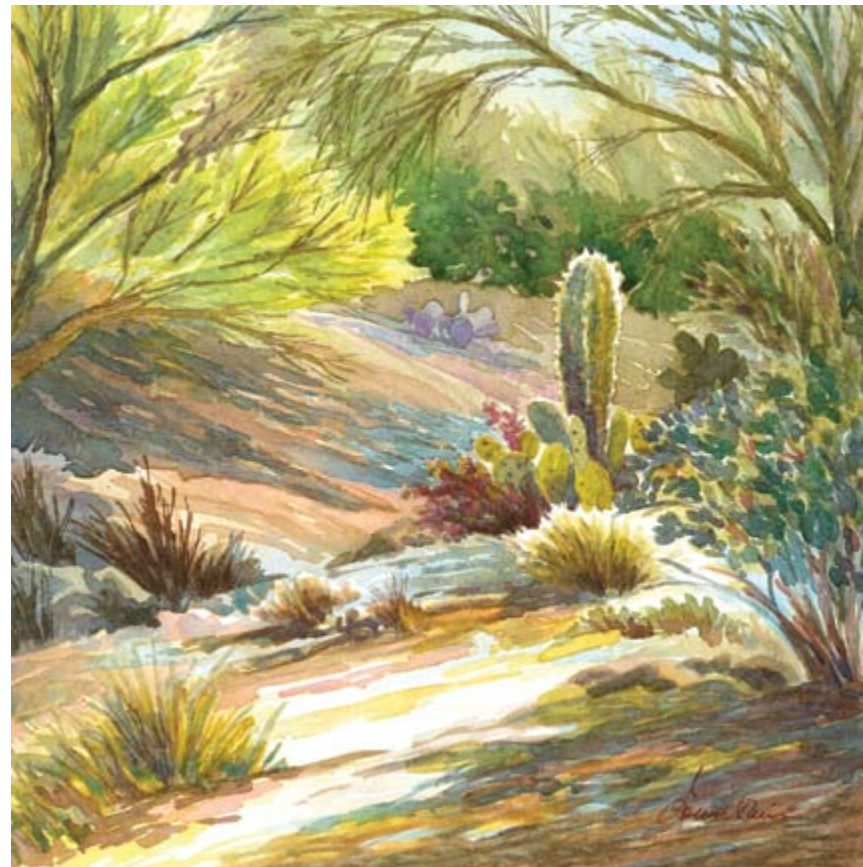
by Dale O’Dell

17” x 12”

Photo-Digital & Archival Pigment Print

\$650

This piece is located at the artist’s studio in **Prescott, AZ**. To learn more, view additional work by this artist, or purchase, visit [www.xanadugallery.com/catalogue](http://www.xanadugallery.com/catalogue) and [click here](#) or call Xanadu Gallery at 480.368.9929.



“This natural Sonoran Desert park is near my home, and I paint there often. This small Saguaro was sheltered by Palo Verdes, often serving as the Saguaro’s “nurse” tree, protecting it in infancy. I loved the backlighting!”

### **3 Hours at Feliz Paseos Park**

by Ellen A. Fountain

18” x 18”

Watercolor

\$430

This piece is located at the artist’s studio in **Tucson, AZ**. To learn more, view additional work by this artist, or purchase, visit [www.xanadugallery.com/catalogue](http://www.xanadugallery.com/catalogue) and [click here](#) or call Xanadu Gallery at 480.368.9929.



*"It Begins* is part of a series which explores water and the shifting reality of reflections contrasted with what lies beneath the surface. I am fascinated by light when it reflects off of multiple surfaces, revealing environment and history along the way. This painting captures a magical moment in early autumn when the leaves are just beginning to fall."

**It Begins**  
by Michelle Howard  
30" x 30"  
Oil  
\$2,070

This piece is located at the artist's studio in **Layton, UT**. To learn more, view additional work by this artist, or purchase, visit [www.xanadugallery.com/catalogue](http://www.xanadugallery.com/catalogue) and [click here](#) or call Xanadu Gallery at 480.368.9929.



*"Triple Vision* is one of a series of paintings focusing on the beauty that can be found in often overlooked areas of nature. This series looks at reflections found in streams and eddies, what appears below and on the surface of the water, as well as what is reflected from above - in other words, the beauty of ordinary things and patterns in nature."

**Triple Vision**  
by Marny Lawton  
18" x 24"  
Oil  
\$2,000

This piece is located at the artist's studio in **Hampton, CT**. To learn more, view additional work by this artist, or purchase, visit [www.xanadugallery.com/catalogue](http://www.xanadugallery.com/catalogue) and [click here](#) or call Xanadu Gallery at 480.368.9929.



“I love the desert and subsequently, I love this piece. Rich biodiversity and vast elemental vistas serve as the inspiration for this series. This piece is part of the *Cactus Series* created at the Vixen Fine Art Metal Gallery by artist Brenna Curry in Bisbee, Arizona. The stainless steel is hand sanded and the process uses no chemicals.”

### Agave

by Brenna Curry: VIXEN Fine Art  
Metal Gallery  
24” x 30”  
Stainless Steel  
\$1,100

This piece is located at the artist’s studio **Bisbee, AZ**.  
To learn more, view additional work by this artist, or purchase,  
visit [www.xanadugallery.com/catalogue](http://www.xanadugallery.com/catalogue) and [click here](#)  
or call Xanadu Gallery at 480.368.9929.



“Similarities and contrasts...the softness of the mutual preening set against the jaw like protection of the plant.”

### Feathers and Thorns

by Fabio B. Deponte  
19” x 28”  
Acrylic  
\$2,400

This piece is located at the artist’s studio in **Petersham, MA**.  
To learn more, view additional work by this artist, or purchase,  
visit [www.xanadugallery.com/catalogue](http://www.xanadugallery.com/catalogue) and [click here](#)  
or call Xanadu Gallery at 480.368.9929.



“My neighbors’ yards quite often provide inspiration for my garden paintings. I usually have to add additional plants to create the effect I want, but this particular garden provided it all, even the afternoon shadows.”

### Garden With Shadows

by Joan Metcalf  
40” x 60”  
Watercolor  
\$2,900

This piece is located at the artist’s studio in **Beaverton, OR**. To learn more, view additional work by this artist, or purchase, visit [www.xanadugallery.com/catalogue](http://www.xanadugallery.com/catalogue) and [click here](#) or call Xanadu Gallery at 480.368.9929.



“The first piece in a series entitled ‘Under The Western Sky’. Locally harvested leaves were used along with vivid watercolors to imprint the fine detail of the veining in the leaves. Rice paper embellishments were added to create a piece rich in texture, color and energy. Makes me want to dance!”

### I Want to Dance

by Sheri Trepina  
15” x 22”  
Watercolor Collage  
\$2,400

This piece is located at the artist’s studio in **Kalispell, MT**. To learn more, view additional work by this artist, or purchase, visit [www.xanadugallery.com/catalogue](http://www.xanadugallery.com/catalogue) and [click here](#) or call Xanadu Gallery at 480.368.9929.



“Vibrant Happy Modern Abstract Floral. Entitled *Happy Day* as hopefully whatever type of day you are having will be brightened by looking at this work!”

**Happy Day**  
by Vanessa Katz  
25” x 25”  
Acrylic  
\$1,600

This piece is located at the artist’s studio in **Palm Desert, CA**. To learn more, view additional work by this artist, or purchase, visit [www.xanadugallery.com/catalogue](http://www.xanadugallery.com/catalogue) and [click here](#) or call Xanadu Gallery at 480.368.9929.



“Every Spring, wildflowers fill the roadsides and fields in the Texas Hill Country with a tapestry of color. As an artist, it is my goal to capture the excitement and joy of Springtime in Texas so that happiness can be felt anytime of year, for years to come.”

**Texas Bouquet**  
by Linda Calvert Jacobson  
40” x 40”  
Acrylic  
\$3,900

This piece is located at the artist’s studio in **New Braunfels, TX**. To learn more, view additional work by this artist, or purchase, visit [www.xanadugallery.com/catalogue](http://www.xanadugallery.com/catalogue) and [click here](#) or call Xanadu Gallery at 480.368.9929.



“The blue Iris is a strikingly beautiful flower - dynamic in shape and color. This is the second, and certainly not the last, in my series of *The Blue Iris*, a flower that inspires my vivid use of color and light.”

**Blue Iris 2**  
by Bethany Sheesley  
30” x 20”  
Acrylic on Canvas  
\$800

This piece is located at the artist’s studio in **Fountain Hills, AZ**. To learn more, view additional work by this artist, or purchase, visit [www.xanadugallery.com/catalogue](http://www.xanadugallery.com/catalogue) and [click here](#) or call Xanadu Gallery at 480.368.9929.



“I strive to transform simple everyday life into un-ordinary, not-so-still life. I like to take an ordinary subject and enhance its perception, inviting the viewer to take a closer look. If you look closer you may discover something new about yourself. I love how the medium takes command. The artist starts the process, but the paint takes charge and often leads to an unintended outcome. It’s always exhilarating.”

**Morning Glorious**  
by Diane Morgan  
36” x 36”  
Oil  
\$2,800

This piece is located at the artist’s studio in **Indian Wells, CA**. To learn more, view additional work by this artist, or purchase, visit [www.xanadugallery.com/catalogue](http://www.xanadugallery.com/catalogue) and [click here](#) or call Xanadu Gallery at 480.368.9929.



“This dining (still life) painting is a rich and colorful visual statement within the site of its surroundings, which invites the viewer to enter into its intimate scenario!”

### Dining Life & Objects

by Molly J. Schiff

36” x 36”

Oil

\$3,200

This piece is located at the artist’s studio in **Evanston, IL & Mesa, AZ.**

To learn more, view additional work by this artist, or purchase, visit [www.xanadugallery.com/catalogue](http://www.xanadugallery.com/catalogue) and [click here](#) or call Xanadu Gallery at 480.368.9929.



“For centuries, the French language, or ‘La lingua Franca’, was utilized as the language of the elite. Each letter of its alphabet is extended in the delicate petals of the Iris, a flower symbolic of France, the Fleur-de-lis. This painting explores some of the French culture’s most revered culinary tastes and traditions. From the series *Alphabets-Beauty of Diversity.*”

### French Curves à la Carte

by Boris Giulian

36” x 60”

Giclee on Canvas

\$1,800

This piece is located at the artist’s studio in **Chatsworth, CA.**

To learn more, view additional work by this artist, or purchase, visit [www.xanadugallery.com/catalogue](http://www.xanadugallery.com/catalogue) and [click here](#) or call Xanadu Gallery at 480.368.9929.



“My Grandparents met at a Box Supper fundraiser for the one room school where my Grandmother was the teacher. She was engaged to someone else. As soon as she sat under the tree with my Granddad (and he tasted her cherry pie) the engagement was off and my Granddad was ‘hooked.’ That must have been some pie!”

**Pie is Love**  
by Judith Goolsby  
20” x 20”  
Acrylic  
\$600

This piece is located at the artist’s studio in **Santa Fe, NM**. To learn more, view additional work by this artist, or purchase, visit [www.xanadugallery.com/catalogue](http://www.xanadugallery.com/catalogue) and [click here](#) or call Xanadu Gallery at 480.368.9929.



“I love to paint martini glasses and combine it with colorful chips and cards. It’s all fun and games with this series of paintings.”

**All In**  
by Bruce Bingham  
16” x 20”  
Oil on Canvas  
\$1,500

This piece is located at the artist’s studio in **St. Julians, Malta**. To learn more, view additional work by this artist, or purchase, visit [www.xanadugallery.com/catalogue](http://www.xanadugallery.com/catalogue) and [click here](#) or call Xanadu Gallery at 480.368.9929.



“Beautiful array of table plates and pots that form part of the everyday meal family tradition. This painting will warm up any room bringing to mind the joy of entertaining.”

### Plates and Pots

by Silvia McGavin  
16” x 40”  
Oil  
\$700

This piece is located at the artist’s studio in **Gibsonia, PA**.  
To learn more, view additional work by this artist, or purchase, visit [www.xanadugallery.com/catalogue](http://www.xanadugallery.com/catalogue) and [click here](#) or call Xanadu Gallery at 480.368.9929.



“A celebration of the small but mighty seed that is the miracle of life.”

### Nature’s Promise

by Donna Heslip  
20” x 16”  
Soft Pastel on Art Board  
\$850

This piece is located at the artist’s studio in **Sun City West, AZ**.  
To learn more, view additional work by this artist, or purchase, visit [www.xanadugallery.com/catalogue](http://www.xanadugallery.com/catalogue) and [click here](#) or call Xanadu Gallery at 480.368.9929.



“The *William Tell Overture* came on the radio and it brought me back to a time when life was simple. We heard the bell from across the street and knew that supper was on the table. With hands washed and pajamas on, we would circle around the television, eagerly awaiting the starting music and that familiar voice. ‘Hi-Yo, Silver! Away!’”

### The Lone Ranger

by J. Scott Nicol  
24” x 30”  
Oil  
\$4,200

This piece is located at the artist’s studio in **Montvale, NJ**. To learn more, view additional work by this artist, or purchase, visit [www.xanadugallery.com/catalogue](http://www.xanadugallery.com/catalogue) and [click here](#) or call Xanadu Gallery at 480.368.9929.



“This award winning oil painting by New York surrealist artist Paul Massaro depicts a classical still life or vanitas. Titled *Ecclesiastes* after the biblical philosopher who expounded that ‘all is vanity’ and that ‘ignorance is bliss.’ This painting represents the beautiful and the tragic. The mystery of life. The meaninglessness of earthly life and the transient nature of all earthly knowledge and pursuits. ‘For with much wisdom comes much sorrow; the more knowledge, the more grief.’”

### Ecclesiastes

by Paul Massaro  
20” x 16”  
Oil on Linen  
\$3,900

This piece is located at the artist’s studio in **Buffalo, NY**. To learn more, view additional work by this artist, or purchase, visit [www.xanadugallery.com/catalogue](http://www.xanadugallery.com/catalogue) and [click here](#) or call Xanadu Gallery at 480.368.9929.



“This photograph captures the collision of two light bulbs, one filled with ball bearings and the other with ground chalk pastels. I wanted to accentuate the contrast between the fragile outside of the light bulb and the strong center of the ball bearings. The vivid color from the pastel dust adds energy to the collision.”

### **Popped Top**

by Jon Smith: Wide Eyed Illuminations  
24” x 36”  
Photograph printed on metal  
\$400

This piece is located at the artist’s studio in **Fishers, IN**.  
To learn more, view additional work by this artist, or purchase,  
visit [www.xanadugallery.com/catalogue](http://www.xanadugallery.com/catalogue) and [click here](#)  
or call Xanadu Gallery at 480.368.9929.



“Old cars have so many artistic possibilities and what stories they could tell if only they could talk. Night Grill has a history, too.”

### **Night Grill**

by Nancy Fortunato,  
TWSA Master Status  
8” x 10”  
Transparent Watercolor  
\$2,000

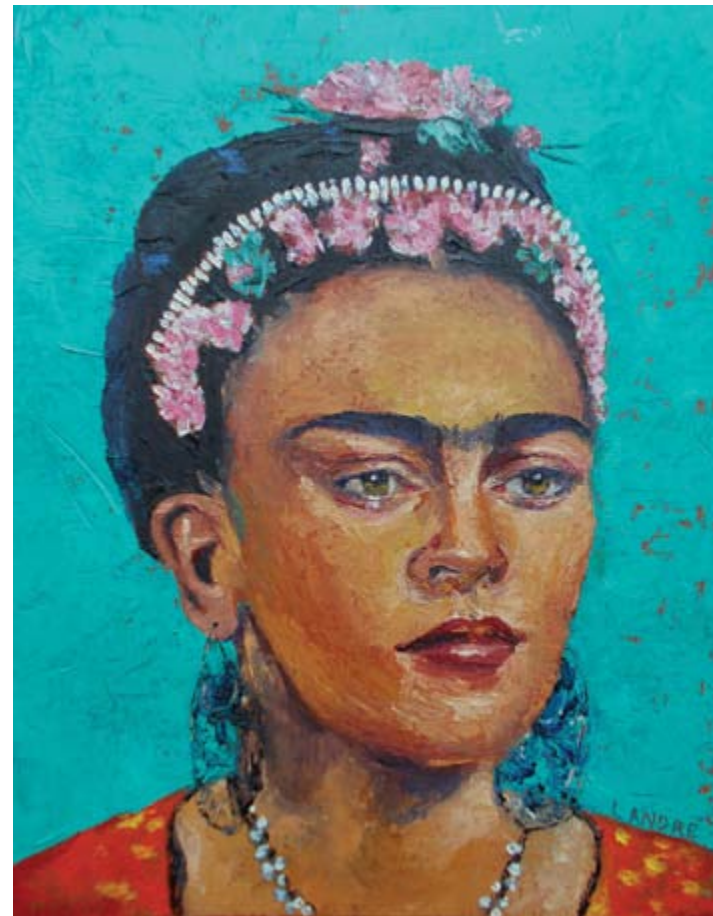
This piece is located at the artist’s studio in **Palatine, IL**.  
To learn more, view additional work by this artist, or purchase,  
visit [www.xanadugallery.com/catalogue](http://www.xanadugallery.com/catalogue) and [click here](#)  
or call Xanadu Gallery at 480.368.9929.



“This photograph, printed on canvas, began as an antique travel Kodachrome of a bullfight in Spain. The pointillist effect comes from re-photographing the grain of the original 1959 Kodachrome. This artwork was exhibited in the Palm Springs Art Museum’s juried ACE 2010 show.”

**Toreador 1959**  
by Gary Rosenblum  
28” x 20”  
Photograph on Canvas  
\$600

This piece is located at the artist’s studio in **Palm Desert, CA**. To learn more, view additional work by this artist, or purchase, visit [www.xanadugallery.com/catalogue](http://www.xanadugallery.com/catalogue) and [click here](#) or call Xanadu Gallery at 480.368.9929.



“Based on a classic black and white photo of Frida Kahlo, this portrait highlights a glamorous look of the Mexican painter. The artist presents an intuitively colorized portrait in water-based oils and palette knife on canvas board. It hangs on a 3” wide wood frame with silver finish.”

**Princess Frida**  
by Lilibeth André  
16” x 12”  
Oil  
\$800

This piece is located at the artist’s studio in **Houston, TX**. To learn more, view additional work by this artist, or purchase, visit [www.xanadugallery.com/catalogue](http://www.xanadugallery.com/catalogue) and [click here](#) or call Xanadu Gallery at 480.368.9929.



“Inspired by a work that I choreographed in the Mid ‘80s. The viewer is invited to participate in its story.”

### **Touch The Face Of The Stars**

by Elizabeth Yarie  
36” x 24”  
Oil Pastel  
\$3,800

This piece is located at the artist’s studio in **Austin, TX**. To learn more, view additional work by this artist, or purchase, visit [www.xanadugallery.com/catalogue](http://www.xanadugallery.com/catalogue) and [click here](#) or call Xanadu Gallery at 480.368.9929.



“This piece was inspired by my observation that the people in the recent Occupy Movement each had a multitude of fragmented agendas. This painting was selected for the 2012 New Texas Talent Exhibition.”

### **Occupy**

by Stefanie Held  
32” x 39”  
Acrylic  
\$2,500

This piece is located at the artist’s studio in **Dallas, TX**. To learn more, view additional work by this artist, or purchase, visit [www.xanadugallery.com/catalogue](http://www.xanadugallery.com/catalogue) and [click here](#) or call Xanadu Gallery at 480.368.9929.



“This was my attempt to show vulnerability with strength. An intimate moment that not only involves the couple, but includes the mystery of the night stars and sky. Also available as a hand signed and numbered limited edition Giclee print in the same dimensions, edition of 50.”

**Lovers Under Stars**  
by Suzanne G. L. Bennett  
32” x 41”  
Watercolor  
\$2,499

This piece is located at the artist’s studio in **Woodland Hills, CA**.  
To learn more, view additional work by this artist, or purchase, visit [www.xanadugallery.com/catalogue](http://www.xanadugallery.com/catalogue) and [click here](#) or call Xanadu Gallery at 480.368.9929.



“This is a collage of my own oil paintings reconstructed and re-imagined into a totally new concept.”

**Refresh**  
by Victoria Brown  
54” x 54”  
Oil Collage  
\$5,500

This piece is located at the artist’s studio in **Linville, NC**.  
To learn more, view additional work by this artist, or purchase, visit [www.xanadugallery.com/catalogue](http://www.xanadugallery.com/catalogue) and [click here](#) or call Xanadu Gallery at 480.368.9929.



“I usually like to keep control of my light with apertures like windows or doors, but here I’ve chosen wild light in an outdoor setting. My model was also less controlled. I would ordinarily compose subjects very carefully, adjusting their pose to the available light. I had Rebecca, a dancer, go through a routine of steps.”

**Rebecca**  
by Jackie Tice  
50” x 36”  
Oil  
\$3,600

This piece is located at the artist’s studio in **Terre Haute, IN**. To learn more, view additional work by this artist, or purchase, visit [www.xanadugallery.com/catalogue](http://www.xanadugallery.com/catalogue) and [click here](#) or call Xanadu Gallery at 480.368.9929.



“The girl is surrounded by her loving companions as they enjoy the bucolic Snohomish river valley scene. Ms. O’Brien enjoys painting relationships between people and animals. This painting is from her *Peaceable Dog Kingdom* series, inspired by artist Edward Hicks.”

**The Girl with Her Three Dogs**  
by Cheri O’Brien  
36” x 24”  
Oil on Panel  
\$2,000

This piece is located at the artist’s studio in **Everett, WA**. To learn more, view additional work by this artist, or purchase, visit [www.xanadugallery.com/catalogue](http://www.xanadugallery.com/catalogue) and [click here](#) or call Xanadu Gallery at 480.368.9929.



“These little girls were like a flock of shorebirds, going from still to flight in a moment. They were completely absorbed in their games, the sun, the sand and the water. The beach, only blocks from my home, is the same one that I played at as a child with the same unconcern for anything outside that perfect moment.”

**Ready, Set, Go!**  
by Christine Crozier  
30” x 36”  
Oil  
\$4,000

This piece is located at the artist’s studio in **Pacific Grove, CA**. To learn more, view additional work by this artist, or purchase, visit [www.xanadugallery.com/catalogue](http://www.xanadugallery.com/catalogue) and [click here](#) or call Xanadu Gallery at 480.368.9929.



“The innocent and yet alert looks on these Tibetan siblings’ faces caught my eye. I was also drawn to the bonding between them through the protective older sister and the clinging younger one, which is often lacking in our society nowadays.”

**Tibetan Sisters**  
by Echo Baker  
16” x 20”  
Oil  
\$1,400

This piece is located at the artist’s studio in **Tustin, CA**. To learn more, view additional work by this artist, or purchase, visit [www.xanadugallery.com/catalogue](http://www.xanadugallery.com/catalogue) and [click here](#) or call Xanadu Gallery at 480.368.9929.



“This painting was inspired by the early settlers of the West and how the fathers taught their children to work. There were so many chores to do as they traveled to the place they wanted to call their own.”

“Children need guidance to know their life’s work; they usually see this through their parents, especially their fathers. Example has always been the best teacher.”

**Sunup Sundown**  
by Helen Horn Musser  
9” x 12”  
Oil  
\$350

This piece is located at the artist’s studio in **Terrell, TX**.  
To learn more, view additional work by this artist, or purchase,  
visit [www.xanadugallery.com/catalogue](http://www.xanadugallery.com/catalogue) and [click here](#)  
or call Xanadu Gallery at 480.368.9929.



“Inspired by the bright sun in Antigua, Guatemala. Light and shadows dance while the people rest in the shade.”

**Out of the Sun**  
by April M. Rimpo  
27” x 28”  
Acrylic & Watercolor  
\$1,000

This piece is located at the artist’s studio in **Dayton, MD**.  
To learn more, view additional work by this artist, or purchase,  
visit [www.xanadugallery.com/catalogue](http://www.xanadugallery.com/catalogue) and [click here](#)  
or call Xanadu Gallery at 480.368.9929.



“He is a *Cowboy Poet* with strong ties to the past. His stories carry you to another time when life seemed more simple. A strong spiritual undertone is in everything he says and does. A true cowboy with the cowboy spirit.”

**The Poet**  
by Ken MacFarlane  
11” x 14”  
Oil  
\$4,000

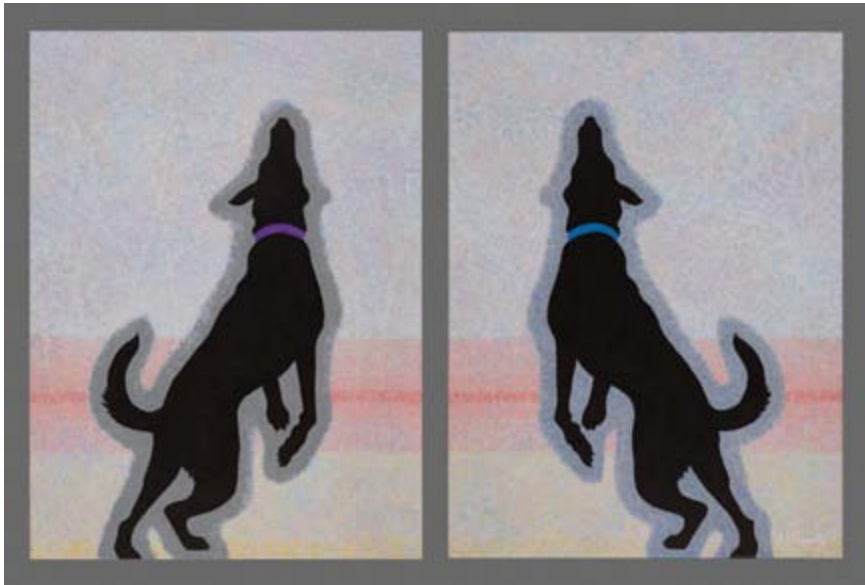
This piece is located at the artist’s studio in **Breckenridge, TX**. To learn more, view additional work by this artist, or purchase, visit [www.xanadugallery.com/catalogue](http://www.xanadugallery.com/catalogue) and [click here](#) or call Xanadu Gallery at 480.368.9929.



“I love to paint people, especially children. My goal is to create a beautiful piece of art that captures the unique attributes of the subject. This piece is intended to convey both the soft innocence and strength of this young girl.”

**The Spanish Gentleman’s Daughter**  
by Beth VanDeventer  
16” x 20”  
Oil  
\$800

This piece is located at the artist’s studio in **Dallas, TX**. To learn more, view additional work by this artist, or purchase, visit [www.xanadugallery.com/catalogue](http://www.xanadugallery.com/catalogue) and [click here](#) or call Xanadu Gallery at 480.368.9929.



“2 *Black Dogs* is an adventure in silhouette, texture, and subtle color. The diptych represents my most recent venture into simple yet powerful images that stir the imagination.”

**2 Black Dogs**  
by James Shumate  
24” x 37”  
acrylic painting  
\$1,400

This piece is located at the artist’s studio in **Harpers Ferry, WV**. To learn more, view additional work by this artist, or purchase, visit [www.xanadugallery.com/catalogue](http://www.xanadugallery.com/catalogue) and [click here](#) or call Xanadu Gallery at 480.368.9929.



“The pastel medium is pure pigment held together with a little binder. Pastel bursts with color and bristles with texture. I’ve exploited these properties of the pastel medium to breathe fire and life into *Tiger, Tiger, Burning Bright* to make the tiger appear to break the two-dimensional plane on which he is painted, exuding power and intensity.”

**Tiger, Tiger, Burning Bright**  
by Patsy Lindamood  
24” x 18”  
Pastel on Ampersand Pastelbord  
\$1,800

This piece is located at the artist’s studio in **Huntsville, TX**. To learn more, view additional work by this artist, or purchase, visit [www.xanadugallery.com/catalogue](http://www.xanadugallery.com/catalogue) and [click here](#) or call Xanadu Gallery at 480.368.9929.



“Is it really a Snowy Owl coming through the dark forest or just the wind in the trees? This beautiful owl dips and turns through the woods, quiet as the mouse it hunts. Ride along on the wing of this ghostly bird and know that as dusk sets we will be safe in the nest.”

“I really loved doing an oil painting working only in a light and dark palette. Giving up full color was difficult but liberating. Enjoy the dark shadows of the forest and the agility of a spectacular bird of prey.”

### Ghost in Torrit Woods

by Laura Curtin  
36” x 24”  
Oil on Canvas  
\$4,150

This piece is located at the artist’s studio in **Westminster, CA**. To learn more, view additional work by this artist, or purchase, visit [www.xanadugallery.com/catalogue](http://www.xanadugallery.com/catalogue) and [click here](#) or call Xanadu Gallery at 480.368.9929.



“This graceful bird was wading in a shadowy pool at Homosassa Springs State Wildlife Park in Florida. I found its stark white feathers, dramatically contrasted against the subtle dancing colors of the dark water, to be breathtaking. Usually deep, dark color gives a feeling of impending doom, but this scene exudes peace and quiet.”

### White Heron

by Mary Ann Pals  
16” x 20”  
pastel  
\$875

This piece is located at the artist’s studio in **Chesterton, IN**. To learn more, view additional work by this artist, or purchase, visit [www.xanadugallery.com/catalogue](http://www.xanadugallery.com/catalogue) and [click here](#) or call Xanadu Gallery at 480.368.9929.



“When it comes to vintage style neon signs, artist Todd Sanders is the original. He has devoted his 20-year career to the deep artistic and cultural roots of 20th century pop culture through the medium of neon signs. Each of his works are created by hand in the original techniques of the master sign makers of yore.”

### Fireflies in a Mason Jar

by Todd Sanders  
12” x 9”  
Metal & Neon  
\$5,000

This piece is located at the artist’s studio in **Austin, TX**. To learn more, view additional work by this artist, or purchase, visit [www.xanadugallery.com/catalogue](http://www.xanadugallery.com/catalogue) and [click here](#) or call Xanadu Gallery at 480.368.9929.



“Cirque du Soleil inspired sculptures climbing the walls. The wires are adjustable, each sold individually. Available in different colors.”

### Wall Climbers

by Ancizar Marin  
11” x 10”  
Fiberglass  
\$250 each

This piece is located at the artist’s studio in **Miramar, FL**. To learn more, view additional work by this artist, or purchase, visit [www.xanadugallery.com/catalogue](http://www.xanadugallery.com/catalogue) and [click here](#) or call Xanadu Gallery at 480.368.9929.



“This bust was inspired when the grain of the wood was exposed, reminding me of elaborate tribal face paint. After hours of studying the wood, the face came to me and the process of bringing my vision to life began as sawdust and wood chips started flying around my studio. My vision came to life.”

### Warrior Within

by Shae Skidmore  
29” x 9”  
Oak  
\$1,500

This piece is located at the artist’s studio in **Cypress, TX**.  
To learn more, view additional work by this artist, or purchase, visit [www.xanadugallery.com/catalogue](http://www.xanadugallery.com/catalogue) and [click here](#) or call Xanadu Gallery at 480.368.9929.



“Her attitude reveals many aspects of the feminine spirit: poise, sensuality, exuberance, self-confidence, energy, and a time to have fun. She was inspired by the love-at-first-sight vision of a girl who later became my wife. Part of the ‘Soft Side’ series.”

### Attitude

by Lawrence Schneider  
29” x 9”  
Maple  
\$3,500

This piece is located at the artist’s studio in **Hunt Valley, MD**.  
To learn more, view additional work by this artist, or purchase, visit [www.xanadugallery.com/catalogue](http://www.xanadugallery.com/catalogue) and [click here](#) or call Xanadu Gallery at 480.368.9929.



“*Spirit Bridge* is a link between the physical world and the realm of Spirit. It also symbolizes my work as a bridge between the East and the West. The arch is a stylistic representation of the ‘torii’, or Shinto gate. *Spirit Bridge* has been richly decorated with numerous patinas. I have used red on part of the ‘torii’, as a color of veneration. I have buffed off patina from the remainder of the arch to create a weathered look. My seal is on the top and it has been polished to expose the bright bronze color.”

**Spirit Bridge**  
by Tom Cannon  
17” x 18”  
Cast Bronze  
\$5,000

This piece is located at the artist’s studio in **Boulder, CO**.  
To learn more, view additional work by this artist, or purchase,  
visit [www.xanadugallery.com/catalogue](http://www.xanadugallery.com/catalogue) and [click here](#)  
or call Xanadu Gallery at 480.368.9929.



“Tradition states that the invitation from the wild Lady’s Slipper Orchid is one of ‘win me, capricious beauty.’ I love the whimsical, playful blossom with its spiral leaves. They represent a rare and unconventional beauty.”

**M’Lady’s Slipper**  
by Phyllis Mantik deQuevedo  
10” x 14”  
Bronze  
\$3,500

This piece is located at the artist’s studio in **Oklahoma City, OK**.  
To learn more, view additional work by this artist, or purchase,  
visit [www.xanadugallery.com/catalogue](http://www.xanadugallery.com/catalogue) and [click here](#)  
or call Xanadu Gallery at 480.368.9929.



“Almost lifesize sculpture by John Latell of Wicomico Forge in Virginia, this piece is welded from stainless and Cor-ten Steel. The horse may be mounted outside to become part of your landscape.”

**Horse**  
by Gloucester Arts on Main  
60” x 75”  
Steel  
\$7,500

This piece is located at the artist’s studio in **Gloucester, VA**. To learn more, view additional work by this artist, or purchase, visit [www.xanadugallery.com/catalogue](http://www.xanadugallery.com/catalogue) and [click here](#) or call Xanadu Gallery at 480.368.9929.



“This bronze sculpture captures a moment frozen in time at a spring branding as a buckaroo’s horse leaps in the air in surprise. The calf they have just roped has run under the horse’s belly. The cowboy moves quickly to pull his dally up off of his saddle horn, hoping to avoid an even bigger wreck!”

**Little Stinker**  
by Kim Corpany  
18” x 8”  
Bronze with Walnut Base  
\$2,970

This piece is located at the artist’s studio in **Morgan, UT**. To learn more, view additional work by this artist, or purchase, visit [www.xanadugallery.com/catalogue](http://www.xanadugallery.com/catalogue) and [click here](#) or call Xanadu Gallery at 480.368.9929.



“One of the models I have worked with is also a Ballet student, which gave me the wonderful opportunity to create a sculpture focusing on the strength, beauty, and grace of dancers. This piece is still in clay and available for a limited time with pre-cast pricing.”

**Flight**  
by Mike Call  
18” x 16”  
Bronze  
\$3,600

This piece is located at the artist’s studio in **Bountiful, UT**.  
To learn more, view additional work by this artist, or purchase, visit [www.xanadugallery.com/catalogue](http://www.xanadugallery.com/catalogue) and [click here](#) or call Xanadu Gallery at 480.368.9929.



“Last year was the celebration of the Golden Gate Bridge. Many people contributed to the final bridge, although some gained distinction as architects. We need to honor all who worked on this monumental, iconic structure. Icons of cities continue to fascinate me. The piece is an assemblage of found materials.”

**Many Hands Build a Bridge**  
by Susan Ashley  
21” x 12”  
10”  
\$1,100

This piece is located at the artist’s studio in **San Jose, CA**.  
To learn more, view additional work by this artist, or purchase, visit [www.xanadugallery.com/catalogue](http://www.xanadugallery.com/catalogue) and [click here](#) or call Xanadu Gallery at 480.368.9929.



“The primary piece in my *Sublime* series, *Purely Sublimely* gave me an opportunity to explore a splendidly pure boulder of Colorado Yule Marble to release an elegant undulating form that seems to play and dance toward ecstasy. The finished form is polished to a fine surface, enhancing stone brilliance and clarity and inviting tactile interaction. As with all of my stone sculptures, I strive to engage the viewer’s eye and sense of touch to harmonize kinetically on patinated steel allowing the observer to select the viewing position according to any preference. The piece is available with a pedestal mounting or for table presentation.”

**Purely Sublimely**  
by Marv Poulson, Stone Sculptor  
27” x 17”  
Stone Sculpture  
\$8,500

This piece is located at the artist’s studio in **Salt Lake City, UT**. To learn more, view additional work by this artist, or purchase, visit [www.xanadugallery.com/catalogue](http://www.xanadugallery.com/catalogue) and [click here](#) or call Xanadu Gallery at 480.368.9929.



“At first glance, *Male/Female Eggshell* appears to be about light and shadow, but this conceptual eggshell piece is about males and females; about power (male) and strength (female). The cracked chicken eggshells represent the female; the ostrich eggshell represents the male.”

**Male/Female Eggshell**  
by Melany Terranova  
12” x 33”  
Mixed Media & Eggshells  
\$1,800

This piece is located at the artist’s studio in **Scottsdale, AZ**. To learn more, view additional work by this artist, or purchase, visit [www.xanadugallery.com/catalogue](http://www.xanadugallery.com/catalogue) and [click here](#) or call Xanadu Gallery at 480.368.9929.



“*Mermaid's Cove* is one of my bargello fish pieces made from fish and water fabric on top with shell and sand fabric on the bottom. It includes three fabrics with mermaids.”

### **Mermaid's Cove**

by Ann S. Lainhart  
44” x 74”  
Quilted  
\$2,275

This piece is located at the artist's studio in **Plymouth, MA**.  
To learn more, view additional work by this artist, or purchase,  
visit [www.xanadugallery.com/catalogue](http://www.xanadugallery.com/catalogue) and [click here](#)  
or call Xanadu Gallery at 480.368.9929.



“This painting is from my ‘Plane Speak’ series. I use mixed media, primarily the fabric and dye painting processes known as Batik and Rozome, to create images that convey feelings of dichotomy and combine my love of color with history.”

### **In Plane Sight II**

by Muffy Clark Gill  
25” x 65.5”  
Mixed Media  
\$4,800

This piece is located at the artist's studio in **Naples, FL**.  
To learn more, view additional work by this artist, or purchase,  
visit [www.xanadugallery.com/catalogue](http://www.xanadugallery.com/catalogue) and [click here](#)  
or call Xanadu Gallery at 480.368.9929.



“This is a representative *Light Sculpture* from a show. Each piece is unique, tailored to space, purpose, and taste. These *Light Sculptures* are created from manufactured glass and brackets. The light originates from one white beam of light from a specially designed lamp and holder. I custom install the sculptures in galleries, museums, business lobbies, homes, outdoor patios...almost anywhere.! I can pre-build them on platforms that are then shipped for you to install but larger ones I must personally install for you. If you are fascinated, please speak with me. A commission starts with a conversation.”

### Waterfall of Light

by Anthony Dallmann-Jones  
84” x 144”  
Dichroic Glass & Light  
\$30,000

This piece is located at the artist’s studio in **Fond du Lac, WI**. To learn more, view additional work by this artist, or purchase, visit [www.xanadugallery.com/catalogue](http://www.xanadugallery.com/catalogue) and [click here](#) or call Xanadu Gallery at 480.368.9929.



“This work of intricate beauty is a Fujiflex Crystal Archival photographic print mounted on aluminum and created from original digital art. It is a tribute to the undamaged humanity of an individual who has witnessed and endured a difficult struggle. The artist asks the beholder to name that individual as the witness that is most meaningful in her/his life.”

### Shield for Witness #1

by Bernard Nicolas  
20” x 20”  
Digital Art  
\$1,390

This piece is located at the artist’s studio in **Los Angeles, CA**. To learn more, view additional work by this artist, or purchase, visit [www.xanadugallery.com/catalogue](http://www.xanadugallery.com/catalogue) and [click here](#) or call Xanadu Gallery at 480.368.9929.



“Scribble series is based on a drawing technique I did as a child, utilizing crayons and a piece of paper. Constructed using commercial fabrics and handmade bias tape; hand appliquéd and heavily hand quilted. This textile artwork is designed to be able to hang in any orientation, making it very versatile in where and how it can be displayed.”

### **Scribble #1: Dream Weaver**

by Jean M. Judd  
36” x 17”  
Thread on Textile  
\$4,195

This piece is located at the artist’s studio in **Cushing, WI**.  
To learn more, view additional work by this artist, or purchase, visit [www.xanadugallery.com/catalogue](http://www.xanadugallery.com/catalogue) and [click here](#) or call Xanadu Gallery at 480.368.9929.



“My work focuses on geometric abstraction. Through the systematic interplay of line and color, I explore the infinitely varied possibilities that exist within the mind. Using no rulers or compasses of any kind, I produce creations that simultaneously evoke computer-generated effects and an idiosyncratically personal vision.”

### **ZigZags**

by Bridget Klappert  
27” x 24”  
Pen, Ink & Marker  
\$1,500

This piece is located at the artist’s studio in **Los Angeles, CA**.  
To learn more, view additional work by this artist, or purchase, visit [www.xanadugallery.com/catalogue](http://www.xanadugallery.com/catalogue) and [click here](#) or call Xanadu Gallery at 480.368.9929.



“This painting was created using the automatic method of the surrealists in which subconscious imagery is allowed to surface during the painting process. It was inspired in part by an earlier work of mine titled *Trapezoidal Phantasms*, in which trapezoids spiral towards a point in infinity. The remainder of the elements occurred in the process.”

### Perpetual Playground

by Ben Avant  
30” x 24”  
Oil on Canvas  
\$1,440

This piece is located at the artist’s studio in **Canutillo, TX**.  
To learn more, view additional work by this artist, or purchase,  
visit [www.xanadugallery.com/catalogue](http://www.xanadugallery.com/catalogue) and [click here](#)  
or call Xanadu Gallery at 480.368.9929.



“I really loved my trip to Australia in 2009-2010 and was very impressed by the red center with its red earth, high temperature and special landscapes. I was inspired to recreate that feeling in this painting using warm colors, an aerial point of view, and some Australian aboriginal inspiration.”

### Australie Centrale

by Nancy Vincent  
36” x 48”  
Acrylic  
\$545

This piece is located at the artist’s studio in **Mirabel, Quebec City, Canada**.  
To learn more, view additional work by this artist, or purchase,  
visit [www.xanadugallery.com/catalogue](http://www.xanadugallery.com/catalogue) and [click here](#)  
or call Xanadu Gallery at 480.368.9929.



“This work consists of 3 panels, 54”x30” each, that can be hung separately or close together. I use the image of the pear as a metaphor in many of my paintings. Here I am visualizing singers harmonizing playfully (I also sing in a choir).”

**Adagio**  
by Marie-Louise McHugh  
54” x 90”  
Oil  
\$6,200

This piece is located at the artist’s studio in **New York, NY**.  
To learn more, view additional work by this artist, or purchase,  
visit [www.xanadugallery.com/catalogue](http://www.xanadugallery.com/catalogue) and [click here](#)  
or call Xanadu Gallery at 480.368.9929.



“Working from internal inspirations, this piece has been a revelation in every sense of the word. As many as 40 layers of paint developed as the work was refined; adding and removing, looking for just the right balance while wanting to focus on the lovely negative space. Both energy and calm are contained and may be experienced within the canvas.”

**Nest /Cage Series (WANDER)**  
by Julie Weaverling  
48” x 72”  
Acrylic  
\$4,900

This piece is located at the artist’s studio in **Vista, CA**.  
To learn more, view additional work by this artist, or purchase,  
visit [www.xanadugallery.com/catalogue](http://www.xanadugallery.com/catalogue) and [click here](#)  
or call Xanadu Gallery at 480.368.9929.



“With the concepts of time and external forces as a creative starting point, I express my admiration for the natural world through bold texture and color. Primal forces and elements of nature work to reclaim what man has built.”

**A Moment of Dazzling Balance**

by Deidre Adams  
36” x 36”  
Acrylic & Mixed Media  
\$3,400

This piece is located at the artist’s studio in **Littleton, CO**. To learn more, view additional work by this artist, or purchase, visit [www.xanadugallery.com/catalogue](http://www.xanadugallery.com/catalogue) and [click here](#) or call Xanadu Gallery at 480.368.9929.



“Walking the high desert plains one day, I found a balloon and was reminded of Jesus’ words: ‘Do not marvel that I said to you ‘you must be born again’. The wind blows where it will and you hear the sound of it but cannot tell where it comes from and where it goes. So is everyone who is born of the Spirit.”

**The Wind Blows Where It Will**

by Diane Fairfield  
18” x 24”  
Oil & Mixed Media  
\$870

This piece is located at the artist’s studio in **Saint David, AZ**. To learn more, view additional work by this artist, or purchase, visit [www.xanadugallery.com/catalogue](http://www.xanadugallery.com/catalogue) and [click here](#) or call Xanadu Gallery at 480.368.9929.



“A recent trip to the island of Hawaii provided the inspiration for *Lunar Glow*. Earlier this year I became enamored with taking photographs of the full moon, which I in turn used as reference photos for my paintings. This calling continued while in Hawaii but required getting up in the middle of the night. I found it surprising that I never needed an alarm clock to awaken 2-3 times a night for 3 nights to take in the quiet and intrigue of the full moon gleaming over the water while it brushed up against the rocky shoreline. That magical hour was awe inspiring and I could sense a oneness with the world. Where does your imagination go while looking at *Lunar Glow*?”

**Lunar Glow**  
by Carol A. McIntyre  
16” x 20”  
Oil  
\$695

This piece is located at the artist’s studio in **Colorado Springs, CO**.  
To learn more, view additional work by this artist, or purchase, visit [www.xanadugallery.com/catalogue](http://www.xanadugallery.com/catalogue) and [click here](#) or call Xanadu Gallery at 480.368.9929.



“Shroyer states: ‘I am inspired by the world - its people, archaeology, and cultures. Through painting I tap into and expand the depths of my unconscious and a world unconscious that transcends individual and cultural boundaries.’ Shroyer has received numerous national and international awards for her work and was recently named a 2013 Emerging Artist by the American Juried Art Salon.”

**Random Thoughts**  
by Charlotte Shroyer  
48” x 48”  
Oil on Canvas  
\$4,800

This piece is located at the artist’s studio in **Taos, NM**.  
To learn more, view additional work by this artist, or purchase, visit [www.xanadugallery.com/catalogue](http://www.xanadugallery.com/catalogue) and [click here](#) or call Xanadu Gallery at 480.368.9929.



“This work is inspired by the scientific discoveries that inform, amaze, and deeply impact my place in this world. Discoveries of faraway galaxies by the Hubble Telescope and elusive life found in the Mariana Trench by deep sea exploration vehicles were catalysts for this piece. I create translucent sculptures that are translated onto paper by repeatedly scanning and meticulously compositing them into one image, a process that parallels NASA’s. Printed on the finest cotton rag paper for a sumptuous look and finished with a contemporary frame.”

### Reinterpreting the Cosmos I

by Sri Prabha  
42” x 42”

Archival Print on Cotton Rag Paper  
Edition of 5  
\$5,000

This piece is located at the artist’s studio in **Miami, FL**.  
To learn more, view additional work by this artist, or purchase,  
visit [www.xanadugallery.com/catalogue](http://www.xanadugallery.com/catalogue) and [click here](#)  
or call Xanadu Gallery at 480.368.9929.



“This painting came after a quiet, reflective spell. It captures the creative energy that flowed through me and onto the canvas using vibrant colors and a palette knife. I live in a beautiful mountain community which has encouraged the healing energy of color and texture to move easily through me and vibrate on the canvas. This painting speaks of the creative energy within all of us, awaiting the expression of our respective talents.”

### Creative Energy

by Wendy Morrison Painter  
30” x 30”

Acrylic  
\$1,200

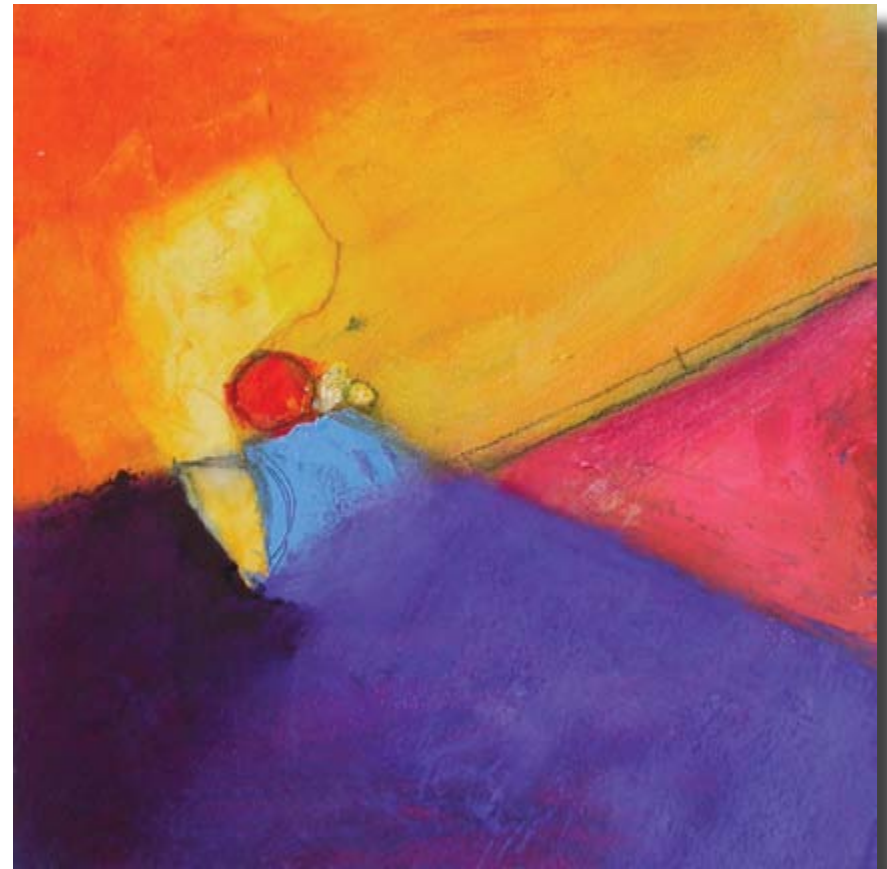
This piece is located at the artist’s studio in **Lansing, NC**.  
To learn more, view additional work by this artist, or purchase,  
visit [www.xanadugallery.com/catalogue](http://www.xanadugallery.com/catalogue) and [click here](#)  
or call Xanadu Gallery at 480.368.9929.



“In this painting, spring is a long way off. The bright colors of the wing retreat into the distance. But the color always holds promise. I love the coming of spring with the noisy insects and intrepid dragonflies.”

**Spring Dragonfly**  
by Susan S. McDonald  
18” x 18”  
Oil and Encaustic  
\$728

This piece is located at the artist’s studio in **Minneapolis, MN**. To learn more, view additional work by this artist, or purchase, visit [www.xanadugallery.com/catalogue](http://www.xanadugallery.com/catalogue) and [click here](#) or call Xanadu Gallery at 480.368.9929.



“Don McKillop’s paintings capture the essence of the landscape in bold shapes and expressive colors. They are about the images that nature conjures up in creating forms in space. They are about the familiar...seen from his unique perspective. Providing evidence of his significant range as an artist, McKillop often reworks his visual vocabulary to satisfy his appetite for describing his surroundings in new ways, from the representational to the abstract.”

**Frisson**  
by Don McKillop  
12” x 12”  
Oil & Mixed Media  
\$1,250

This piece is located at the artist’s studio in **Martha’s Vineyard, MA**. To learn more, view additional work by this artist, or purchase, visit [www.xanadugallery.com/catalogue](http://www.xanadugallery.com/catalogue) and [click here](#) or call Xanadu Gallery at 480.368.9929.

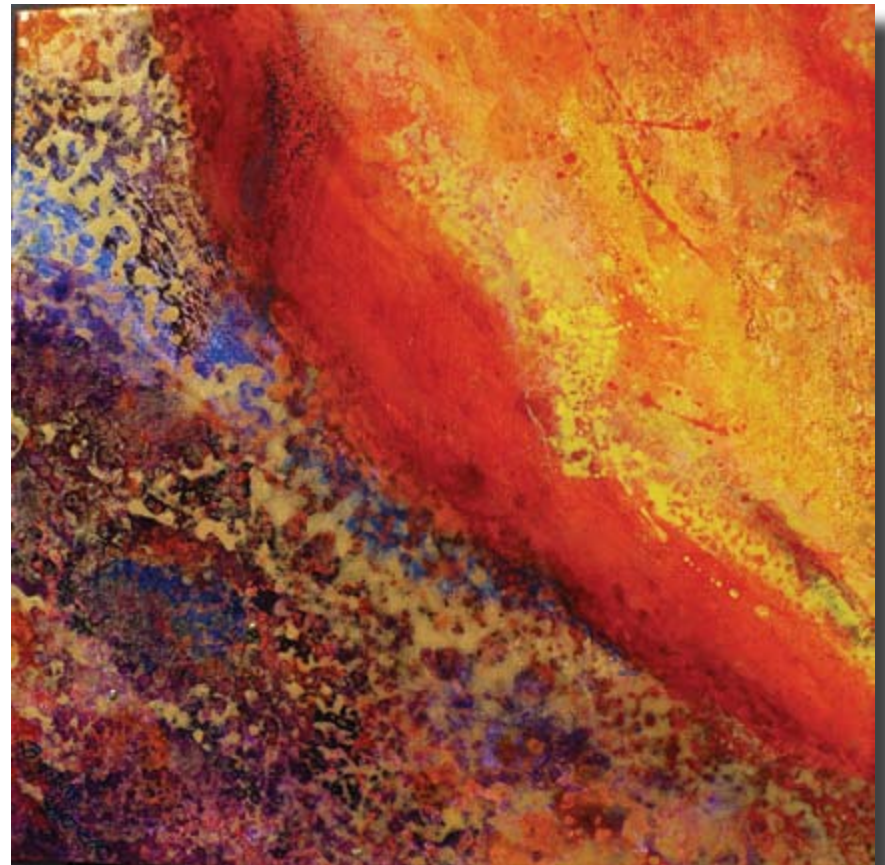


“After visiting the Glass Gardens in Seattle last summer, I was fascinated with the idea of painting the texture, color, and luminosity found in the glass.”

### You are in My Heart

by Dune Tencer  
36” x 24”  
Acrylic  
\$650

This piece is located at the artist’s studio in **Houston, TX**.  
To learn more, view additional work by this artist, or purchase,  
visit [www.xanadugallery.com/catalogue](http://www.xanadugallery.com/catalogue) and [click here](#)  
or call Xanadu Gallery at 480.368.9929.



“Visiting the Big Island of Hawaii had a major impact on me, inspiring multiple paintings that I hope will convey the power of the volcanic eruptions I witnessed.”

### Pele's Revenge II

by Bonnie Carter  
12” x 22”  
Acrylic  
\$500

This piece is located at the artist’s studio in **Avondale Estates, GA**.  
To learn more, view additional work by this artist, or purchase,  
visit [www.xanadugallery.com/catalogue](http://www.xanadugallery.com/catalogue) and [click here](#)  
or call Xanadu Gallery at 480.368.9929.



“September Process is a part of the series *Re-Membering MySelf*, an ongoing journey of rich, emotional, and revealing experiences. As with all of my work, the painting evolved in unexpected ways and was complete as I came to a sense of peace with the message coming to light.”

### September Process

by Debra Hillard  
48” x 32”  
Acrylic  
\$6,400

This piece is located at the artist’s studio in **Phoenix, AZ**.  
To learn more, view additional work by this artist, or purchase, visit [www.xanadugallery.com/catalogue](http://www.xanadugallery.com/catalogue) and [click here](#) or call Xanadu Gallery at 480.368.9929.



“Intriguing overlap of ideas, colors, forms and energies, with a Witch-y Tree in the corner.”

### Composite Emotions

by Pat Paxson  
40” x 30”  
Acrylic  
\$2,400

This piece is located at the artist’s studio in **Chandler, AZ**.  
To learn more, view additional work by this artist, or purchase, visit [www.xanadugallery.com/catalogue](http://www.xanadugallery.com/catalogue) and [click here](#) or call Xanadu Gallery at 480.368.9929.



“Cows are a familiar part of our landscape. They have an ease about them as they calmly nibble their way through life. I am drawn to their shapes and dark images on light pasture grasses. I painted the cows in this fashion because watercolor lends itself to juicy washes and defined and soft edges and it delighted me.”

**The Girls**  
by Molly Hargarten  
20” x 20”  
Watercolor  
\$950

This piece is located at the artist’s studio in **Lafayette, CO**.  
To learn more, view additional work by this artist, or purchase, visit [www.xanadugallery.com/catalogue](http://www.xanadugallery.com/catalogue) and [click here](#) or call Xanadu Gallery at 480.368.9929.



“Inspired by a poem from Rilke: ‘I would rather sense you as the earth senses you - In my ripening...’”

**In My Ripening**  
by Elizabeth Weber  
18” x 18”  
Acrylic  
\$500

This piece is located at the artist’s studio in **Little Rock, AR**.  
To learn more, view additional work by this artist, or purchase, visit [www.xanadugallery.com/catalogue](http://www.xanadugallery.com/catalogue) and [click here](#) or call Xanadu Gallery at 480.368.9929.



“This painting is suggestive of the multi-faceted relationship between brothers and sisters. Most often, whether communicated or not, brothers and sisters love each other. Intricate relationships are formed over time between siblings, all containing both positive and negative experiences. At times there can be tension, hijinx, antics, and competition. Just as many times, there is mentoring, caring, admiration, support, friendship, and much more. At all times, these family ties tend to be complex ones. I hope this painting will encourage viewers to reflect on similar relationships in their lives.”

### Brothers and Sisters

by Thyra Moore  
19” x 27”  
Watercolor  
\$2,240

This piece is located at the artist’s studio in **Stevensville, MD**. To learn more, view additional work by this artist, or purchase, visit [www.xanadugallery.com/catalogue](http://www.xanadugallery.com/catalogue) and [click here](#) or call Xanadu Gallery at 480.368.9929.

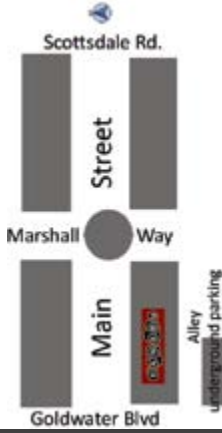


“Translucent layers of metallic paint over a textured ground create a dynamic shifting light within this painting. When the ambient light in a room changes throughout the day and night, different layers of colour come out creating movement within the painting. Horizontal design and minimal elements evoke a calm and serene emotion in the viewer.”

### Bronze Moment

by Sandy Kay  
24” x 48”  
Acrylic  
\$1,700

This piece is located at the artist’s studio in **Halfmoon Bay, BC**. To learn more, view additional work by this artist, or purchase, visit [www.xanadugallery.com/catalogue](http://www.xanadugallery.com/catalogue) and [click here](#) or call Xanadu Gallery at 480.368.9929.



catalog \$5.95 | 20130596



Be sure to like our page on Facebook for updates on events and new arrivals  
<http://bit.ly/ygEKqi>



**Xanadu Gallery**

7039 E. Main St #101  
 Scottsdale, AZ 85251

480.368.9929

866.483.1306

[www.xanadugallery.com](http://www.xanadugallery.com)

Xanadu Gallery is located on the south side of Main Street in Old Town Scottsdale between Marshall Way and Goldwater. Parking is available on Main Street or in our underground parking garage behind the gallery.



Join us for  
**ArtWalk!**

Every Thursday evening, 7-9 p.m.

October - May



Wild Spring Poppies | Oil | 20" x 60" | \$3,300